

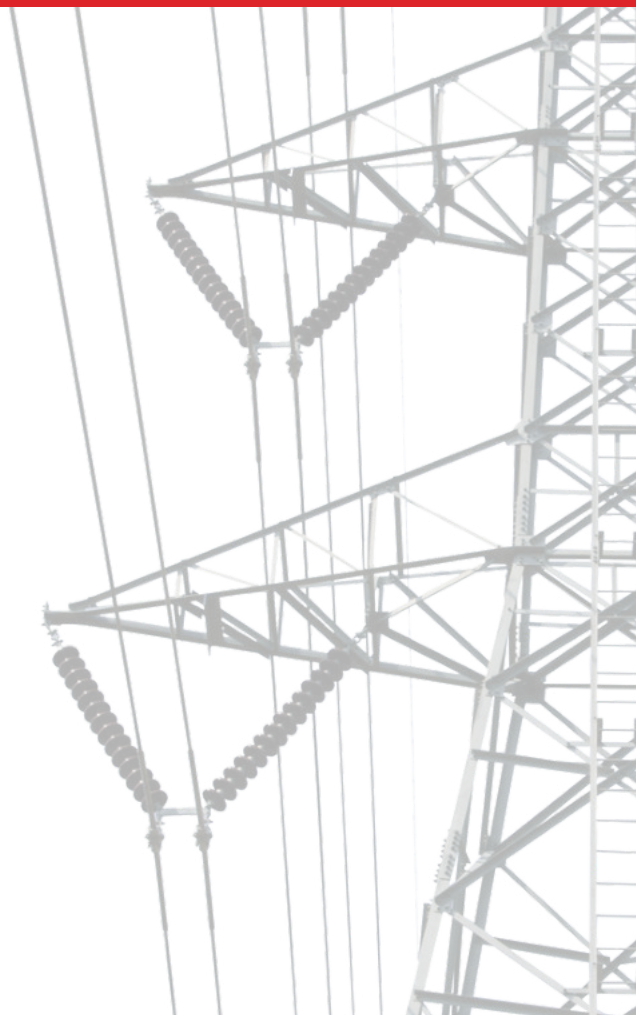


## OVERHEAD POWER TRANSMISSION LINES

### SET OF ROPES AND PERSONAL SAFETY DEVICES FOR INSTALLATION OF OVERHEAD POWER TRANSMISSION LINES

In our wide range you will find ropes for installations of overhead lines, auxiliary ropes for transporting material and ropes for fixing. The extensive selection of ropes is complemented by an equally diverse range of personal safety equipment, which is an integral part of working safely on power transmission poles and towers.

An overhead power line operates as a channel to transfer electromagnetic waves of varying voltage levels across a variety of distances, environments, and landscapes to supply electrical power where it is needed.





# THE BASIC PRINCIPLE OF THE USE OF ENERGO ROPES WHEN APPLIED TO OVERHEAD POWER LINES

The use of steel cables for power lines is challenging and often dangerous. That is why we have developed the ENERGO range of textile ropes installation of overhead power transmission lines. Thanks to their structure, low weight and surface treatment, these ropes not only fully replace their steel counterparts, but also make installation much easier. Because they are safe to use, the risk of damage to health and property is also reduced. In addition to rigorous testing, the quality of the ropes is demonstrated by their successful use in practice.

Each of our ropes for power lines has a different specification and thus a different form of optimal use.



At the beginning the energy rope is connected to the steel rope with a conical coupling.



Detail of energy rope in real conditions.



Lifting the energy rope up the tower and connecting it to the old wire by the workers.



The new wire on the second high voltage tower is ready on the winch. It weighs several tonnes.



They lift a worker up using a platform with an auxiliary rope and then pull the new wire up and connect it to the old one.



Detail of the connection of the old wire to the auxiliary rope that starts to be dragged by the winch.



On the original side, the winching device is switched on and the new wire is pulled instead of the old one with a rope.





# OVERHEAD LINES INSTALLATIONS



## ENERGO Force

HV

EHV



Rope made of high-strength textile material with a durable cover and special coating for outdoor work. With its extreme strength, it fully replaces the steel rope. It is flexible, adapts to bending and much more lighter.

### ✓ Benefits

- does not conduct electricity.
- resistant to UV
- 30 - 40 % longer service life compared to ordinary rope
- does not absorb water
- oil resistant

**lanex**

*You can be sure*



## ENERGO Base

MV



Polyester braided rope withstand heavy wear not only due to the load, but it is also ideal to use in a variable outdoor environment. It is pleasant to the touch. Rope is finished with 30 cm stitched eye. Stitching is certified for 5 tons.

### ✓ Benefits

- does not conduct electricity
- resistant to UV
- low water absorption up to 5 %
- resistant to oils and acids

## ENERGO Fix

Twisted polypropylene rope with good visibility.

### ✓ Benefits

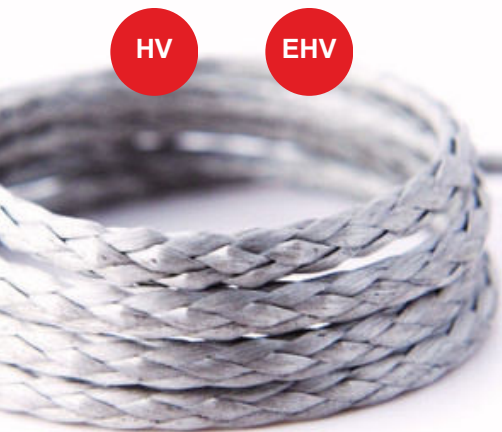
- does not absorb water
- does not conduct electricity



## ENERGO HMPE

HV

EHV



High strength rope without outer cover for high voltage power lines. Highly resilient, light, UV resistant HMPE rope is perfect replacement for steel ropes. HMPE rope is impregnated with durable coating that reduces abrasion and extends service life. Offers safer handling solution compared to standard steel wire ropes.

### ✓ Benefits

- does not conduct electricity
- resistant to UV
- does not absorb water



# PERSONAL SAFETY DEVICES



## RECOMMENDED GEAR



**W9603**  
**FLASH ACCESS**  
protective helmet



**W0093SY**  
**BODY II ENERGY**  
full body fall arrest harness



## ACCESSORIES

**W0010YB/W0010BB**  
**FRANKLIN**  
work positioning seat



**K031DSD00**  
**DOUBLE STOP PLUS**  
descender with anti-panic system



**RK805BX00**  
**CAM CLEAN**  
compact and lightweight  
chest ascender



**RK804BX0R/RK804BX0L**  
**LIFT**  
hand ascenders



**RK803BB00**  
**TANDEM PULLEY**  
double pulley



**W1010BB09**  
**LOCKER**  
guided type fall  
arrester and work  
positioning device



**K4081ZO**  
**D STEEL CONNECTOR**  
/ TRIPLE LOCK  
steel connector



**K3536PP00**  
**BIG CONNECTOR**  
big light alloy connector



**S9000**  
**GEAR BAG**  
transport bag



**C0012YB**  
**FALCONER FULL**  
Lightweight gloves  
featuring great  
grip, dexterity and  
ability

