

Ropes for installing electrical lines ■





HV

EHV

ENERGO force

Rope made of high-strength textile material with a durable cover and special coating for outdoor work. With its extreme strength, it fully replaces the steel rope. It is flexible, adapts to bending and much more lighter.

- Does not conduct electricity.
- Resistant to UV.
- 30-40% longer service life compared to ordinary rope.
- Does not absorb water.
- Oil resistant.

Diameter mm	Weight g/m	Working load 5:1 kg	Standard coil length m
8	40	491	1500
10	65	785	1200
12	95	1373	1000
14	130	1962	800
16	165	3139	500

Diameters 18, 20, 22, 24 mm on request.

Rope is finished with 30 cm spliced eye.

MV

ENERGO base



Polyester braided rope withstand heavy wear not only due to the load, but it is also ideal to use in a variable outdoor environment. It is pleasant to the touch. Rope is finished with 30 cm stitched eye. Stitching is certified for 5 tons.

- Low water absorption up to 5 %.
- Resistance to oils and acids.
- Resistant to UV.
- Does not conduct electricity.

Diameter mm	Weight g/m	Working load 5:1 kg	Standard coil length m
6	27	235	2000
8	55	383	1500
10	81	569	1200
12	130	706	1000
14	159	883	1000
16	186	1001	1000

Diameters 18, 20, 22, 24 mm on request.

LV

ENERGO line



Twisted polysteel rope with increased abrasion resistance. Strong and ultra-light rope.

- Easy to splice.
- Low water absorption up to 1 %.
- Does not conduct electricity.

Diameter mm	Weight g/m	Working load 5:1 kg	Standard coil length m
10	46	392	1000
12	65	589	1000
14	89	785	1000
16	116	932	1000
18	147	1177	1000
20	181	1472	1000



ENERGO lift

Polyester/polyamide rope with long service life. It is pleasant to the touch.

- Easy to splice.
- High resistance to UV.

Diameter mm	Weight g/m	Working load 5:1 kg	Standard coil length m
6	27	149	200
8	47	218	200
10	70	292	200
12	99	426	200
14	121	591	200
16	195	785	200



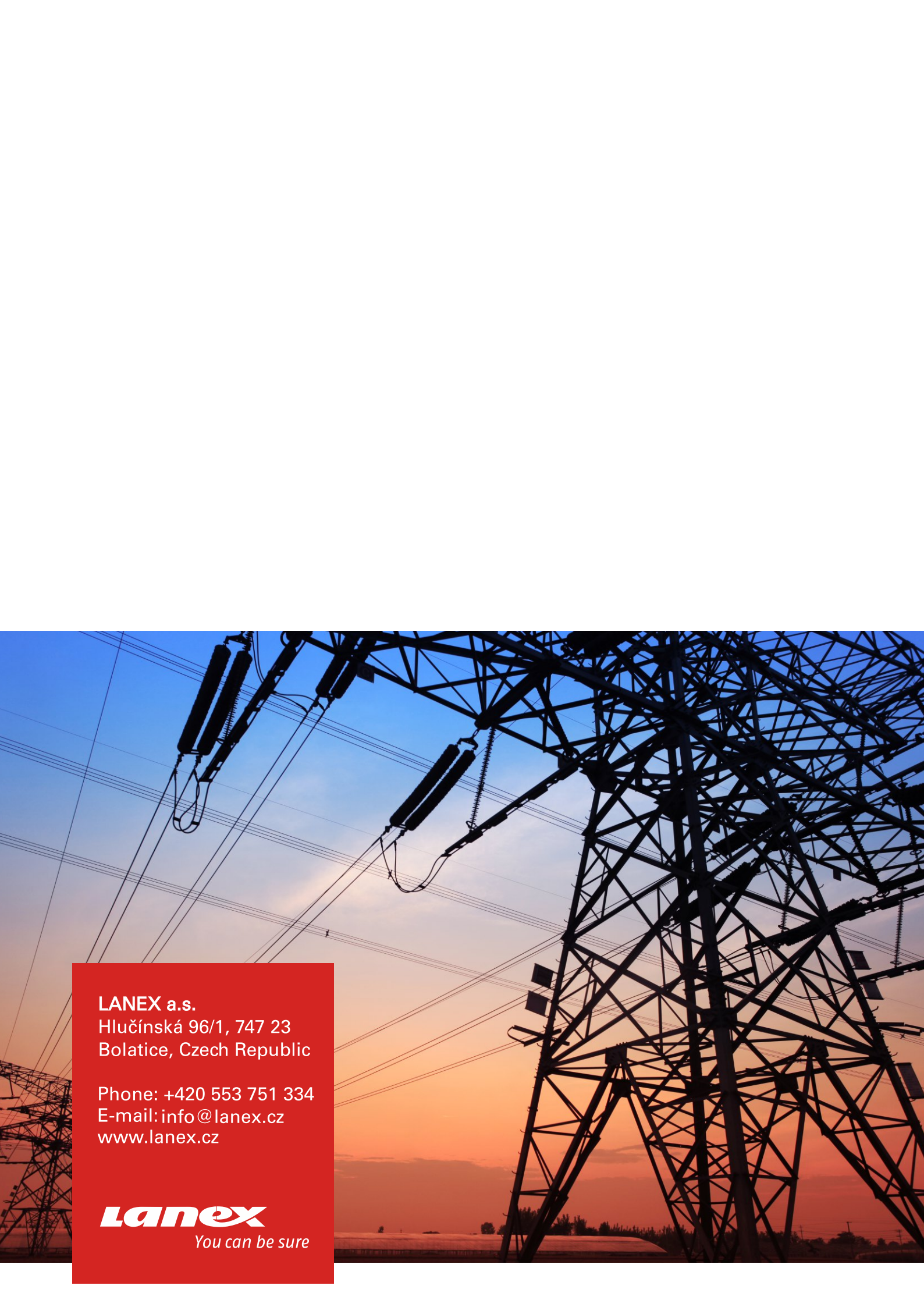
ENERGO fix

Twisted polypropylene rope with good visibility.

- Does not absorb water.
- Does not conduct electricity.

Diameter mm	Weight g/m	Working load 5:1 kg	Standard coil length m
3	3,8	28	200
6	16	137	1200
8	29	235	1000
10	45	353	1000
12	65	491	1000
14	89	647	1000
16	116	824	1000
18	146	1020	1000
20	181	1236	1000





LANEX a.s.

Hlučínská 96/1, 747 23
Bolatice, Czech Republic

Phone: +420 553 751 334

E-mail: info@lanex.cz

www.lanex.cz

lanex

You can be sure